

The focus of Option 3 is the restoration of St George's Guildhall to its original form; the stage and fixed seating are removed to create a single level floor with an access stair off the King Street entrance, to recreate the mediaeval space, which would also allow much greater flexibility of use.

Temporary staging and loose flat seating would be provided for performances, and a capacity of 200 can be provided.

The main entrance for the Guildhall complex is from the Courtyard, with a central reception and a new lift and accessible stair located adjacent, and a new glazed link provides covered access to the Fermoy Gallery. At first floor level a new glass walkway will provide access into the Guildhall.

When performances and events take place in the Guildhall it will be possible to have two reception points, one in the current Box Office location allowing the King Street entrance to be used, as well as the new reception. The Red Barn becomes a flexible space which could accommodate a new interval bar, and part of the ground floor can become a community space.

The corridor becomes an interpretation space describing the development of the Guildhall from its first construction to the present day.

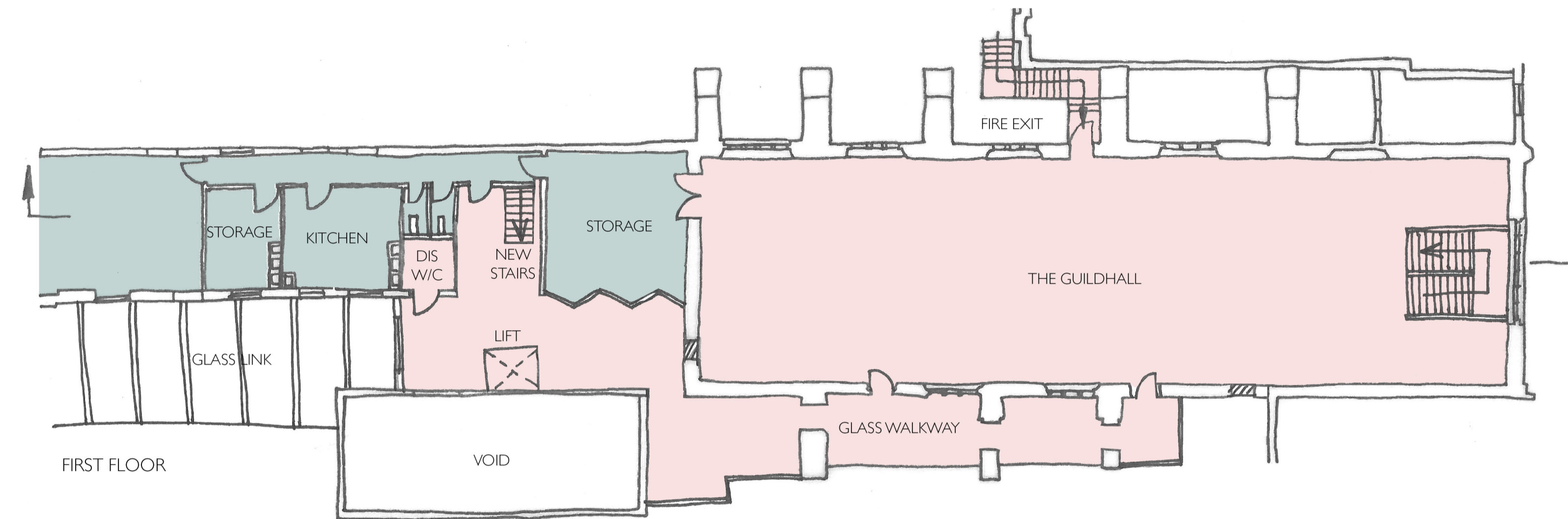
The first floor of the rear Warehouse range is adapted to provide additional catering and washroom facilities as well as flexible meeting room/ changing room accommodation.

The undercroft restaurant has a dedicated entrance from King Street and washroom facilities.

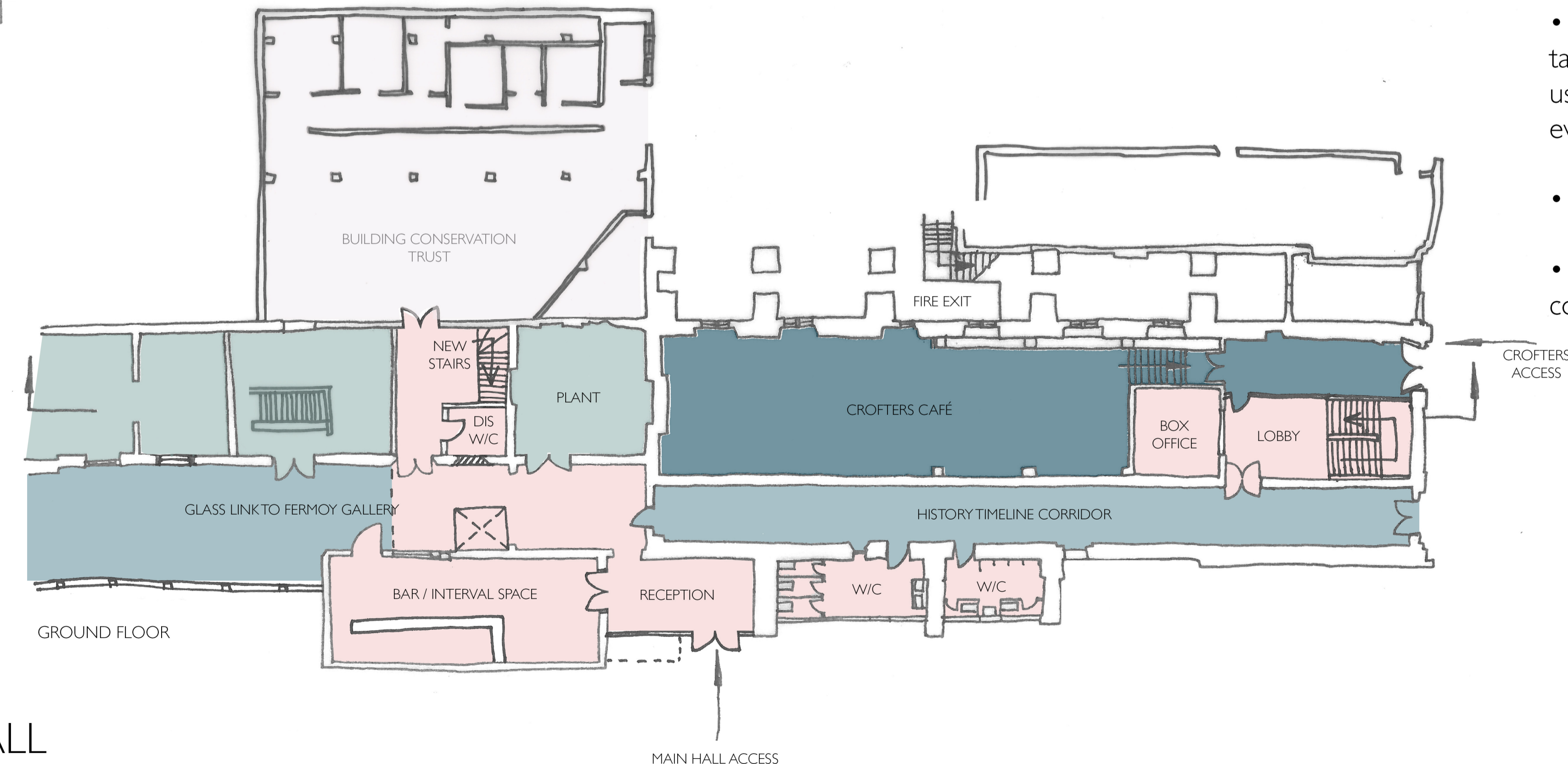
- BUILDING CONSERVATION TRUST
- THEATRE SPACES
- PUBLIC SPACES
- STAFF SPACES
- CROFTERS CAFE



SECTION A-A



FIRST FLOOR



GROUND FLOOR

PROS

- The restoration of the mediaeval Guildhall to its original form
- Greater flexibility of use enabling it to be used for a variety of events including performance, rehearsal, leisure activities/ clubs and public and private functions
- The first floor glass walkway becomes a 'lantern' feature illuminated to draw people into the courtyard to the entrance
- The centrally located main entrance will create a single point of control for all the functions within the complex
- The dedicated entrance and washroom facilities for the restaurant allow it to function separately from the Guildhall, or as part of it.
- The unattractive metal escape stair at the courtyard entrance is removed
- The lift and accessible staircase is at the main entrance

CONS

- A reduction in the number of seats available for performances
- Temporary staging, loose seating and tables, etc., need to be stored when not in use, or hired, with associated setting out for events
- The 1950s staircase arrangement is lost
- Greater difficulty to 'sign' people to the courtyard entrance from King Street